

**Zebrafish mapk8 Antibody**  
**Purified Rabbit Polyclonal Antibody (Pab)**  
**Catalog # Azb18717a****Specification**

---

**Zebrafish mapk8 Antibody - Product Information**

Application	WB,E
Primary Accession	<a href="#">O9DGD9</a>
Other Accession	<a href="#">P49187</a> , <a href="#">Q61831</a> , <a href="#">P53779</a> , <a href="#">P49186</a> , <a href="#">Q9WTU6</a> , <a href="#">P45984</a> , <a href="#">P79996</a> , <a href="#">Q8QHK8</a> , <a href="#">P49185</a> , <a href="#">Q91Y86</a> , <a href="#">P45983</a> , <a href="#">P92208</a> , <a href="#">Q8WQG9</a>
Reactivity	Zebrafish
Predicted	C.Elegans, Drosophila, Human, Mouse, Rat, Xenopus, Chicken
Host	Rabbit
Clonality	Polyclonal
Isotype	Rabbit IgG
Antigen Region	183-215

**Zebrafish mapk8 Antibody - Additional Information****Gene ID** 65236**Other Names**

Mitogen-activated protein kinase 8, MAP kinase 8, MAPK 8, Stress-activated protein kinase JNK1, c-Jun N-terminal kinase 1, mapk8, jnk1

**Target/Specificity**

This Zebrafish mapk8 antibody is generated from a rabbit immunized with a KLH conjugated synthetic peptide between 183-215 amino acids from zebrafish mapk8.

**Dilution**

WB~~1:1000

E~~Use at an assay dependent concentration.

**Format**

Purified polyclonal antibody supplied in PBS with 0.09% (W/V) sodium azide. This antibody is purified through a protein A column, followed by peptide affinity purification.

**Storage**

Maintain refrigerated at 2-8°C for up to 2 weeks. For long term storage store at -20°C in small aliquots to prevent freeze-thaw cycles.

**Precautions**

Zebrafish mapk8 Antibody is for research use only and not for use in diagnostic or therapeutic procedures.

**Zebrafish mapk8 Antibody - Protein Information**

**Name** mapk8

**Synonyms** jnk1

**Function** Responds to activation by environmental stress and pro- inflammatory cytokines by phosphorylating a number of transcription factors, primarily components of AP-1 such as c-Jun and ATF2 and thus regulates AP-1 transcriptional activity. May play a role in the regulation of the circadian clock.

**Cellular Location**

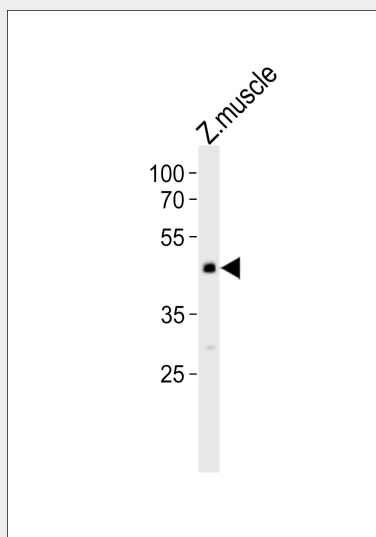
Cytoplasm {ECO:0000250|UniProtKB:P49185}. Nucleus {ECO:0000250|UniProtKB:Q91Y86}. Synapse {ECO:0000250|UniProtKB:P49185}

**Zebrafish mapk8 Antibody - Protocols**

Provided below are standard protocols that you may find useful for product applications.

- [Western Blot](#)
- [Blocking Peptides](#)
- [Dot Blot](#)
- [Immunohistochemistry](#)
- [Immunofluorescence](#)
- [Immunoprecipitation](#)
- [Flow Cytometry](#)
- [Cell Culture](#)

**Zebrafish mapk8 Antibody - Images**



Western blot analysis of lysate from zebrafish muscle tissue lysate, using Zebrafish mapk8 Antibody (Cat. #Azb18717a). Azb18717a was diluted at 1:1000. A goat anti-rabbit IgG H&L (HRP) at 1:10000 dilution was used as the secondary antibody. Lysate at 35ug.

**Zebrafish mapk8 Antibody - Background**

Responds to activation by environmental stress and pro- inflammatory cytokines by phosphorylating a number of transcription factors, primarily components of AP-1 such as c-Jun and ATF2 and thus regulates AP-1 transcriptional activity (By similarity).

## **Zebrafish mapk8 Antibody - References**

Fujii R., et al. J. Cell Biol. 150:1335-1348(2000).